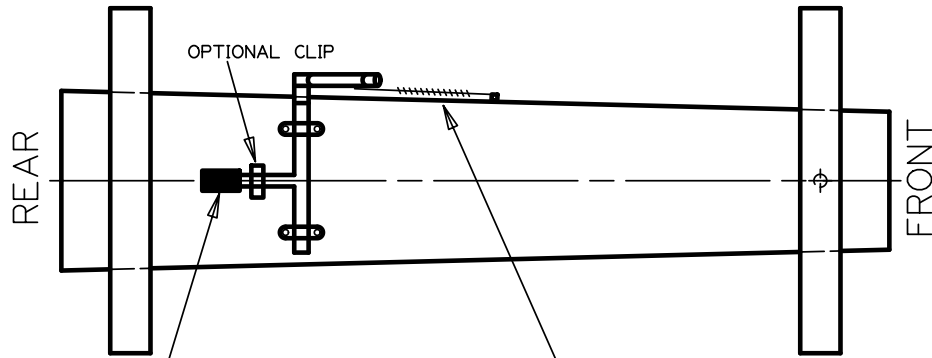


\*IT IS REQUIRED THAT STEERING, BRAKE, OR OTHER FUNCTIONAL COMPONENTS BE ATTACHED BY THROUGH-BOLTING.

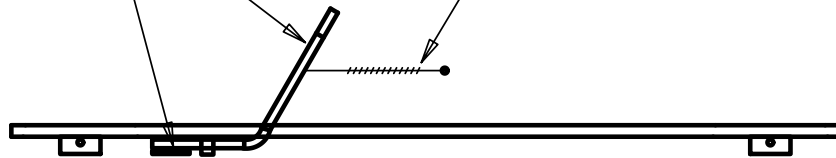
-VIEW OF BOTTOM OF CAR-



HEAVY RUBBER PAD  
"BRAKE SHOE"

BRAKE LEVER HANDLE SHOULD BE  
A MINIMUM OF 12" LONG FOR  
PROPER LEVERAGE

RETURN SPRING (FIRMLY  
ATTACHED TO BODY/FRAME)

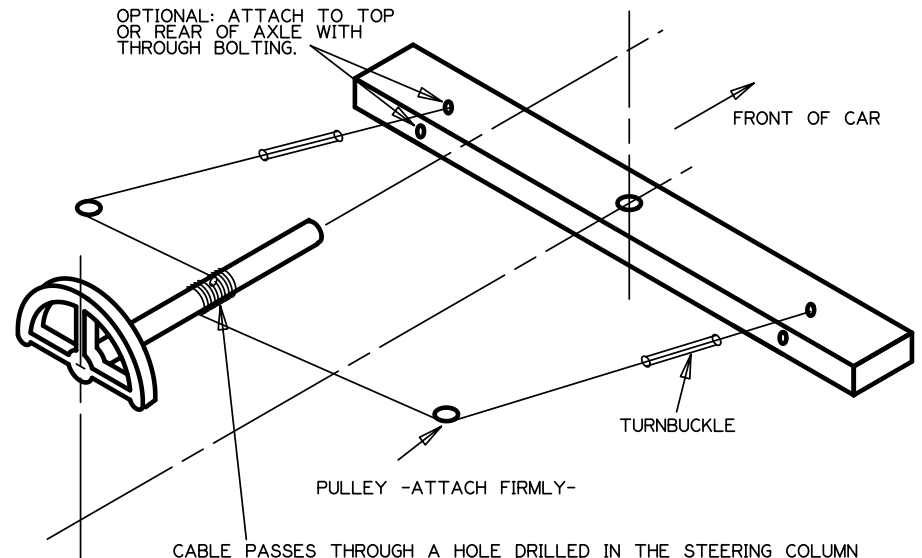


-SIDE VIEW-

"BRAKE SHOE" TO BE LOCATED IN CAR'S CENTERLINE TO PREVENT  
CAR VEERING TO SIDE WHEN BRAKE IS APPLIED.

FIGURE 3: SUGGESTED BRAKE ASSEMBLY

(CABLE WRAP IS SHOWN "EXPANDED" FOR CLARITY OF THIS SKETCH. IN REALITY, IT WILL BE TIGHTLY WOUND AROUND COLUMN).



CABLE PASSES THROUGH A HOLE DRILLED IN THE STEERING COLUMN  
AND WRAPS ONTO BOTTOM OF THE STEERING COLUMN, SO  
THAT CAR STEERS IN THE DIRECTION THE WHEEL IS TURNED.

FIGURE 4: SUGGESTED STEERING ASSEMBLY

NOTES:

1. CAR BODY DESIGN OPTIONAL
2. ONLY BASIC COMPONENTS ARE SHOWN.

NEW BERLIN SOAP BOX DERBY COMMISSION

SUGGESTED BRAKE AND  
STEERING ASSEMBLIES

SCALE:  
NONE

FIGURE 3 & 4

05/10/11